

**650 Alamo Pintado Rd, #101**  
SOLVANG, CA 93463

MEDICAL OFFICE  
**FOR LEASE**



**SAPPHIRE SELECT**  
PROPERTIES, INC.

**LENA BERCH** | OWNER/BROKER  
DRE #00864783  
lena@sapphireselectproperties.com

**CRISTINA BERCH** | LEASING COORDINATOR  
DRE #02193142  
cristina@sapphireselectproperties.com

DRE #02193853  
**805.694.6355**

[WWW.SAPPHIRESELECTPROPERTIES.COM](http://WWW.SAPPHIRESELECTPROPERTIES.COM)





# Suite 101 SPECIFICS

**LEASE PRICE:** \$2.25/SF=\$1,476/MONTH

**NNN** \$0.75/SF=\$492/MONTH

**UNIT SIZE:** 656 SF

**LEVEL:** GROUND-FLOOR

**LOT SIZE** 34,412 SF (0.79AC)

**FLOORS:** 3

**LEASE TERM:** 3-5 YEARS

**ESCALATIONS:** 3% BUMPS

**ZONING:** PO (PROFESSIONAL OFFICE)

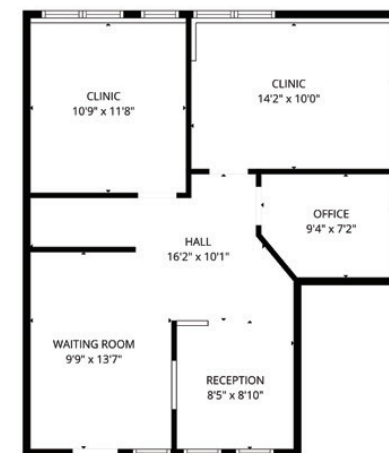
**PARKING:** IN PARKING LOT (UNASSIGNED)

**HVAC:** YES

**YEAR:** 1988

**ELEVATORS:** YES

**RESTROOMS:** COMMON



**LOCATED NEAR  
SYV COTTAGE  
HOSPITAL**

*Lease Rate*  
**\$1,968/month**

Suite 101 is a ground-floor medical office located in the well-maintained Village One Professional Building near SYV Cottage Hospital. This professional medical building features landscaped walkways, patio areas, and ample two-level parking. The suite includes a welcoming reception area, two exam rooms with sinks, and a private office or storage room. Conveniently located within walking distance to shopping, dining, medical services, the hospital, and a local transit stop—ideal for medical or wellness practices.

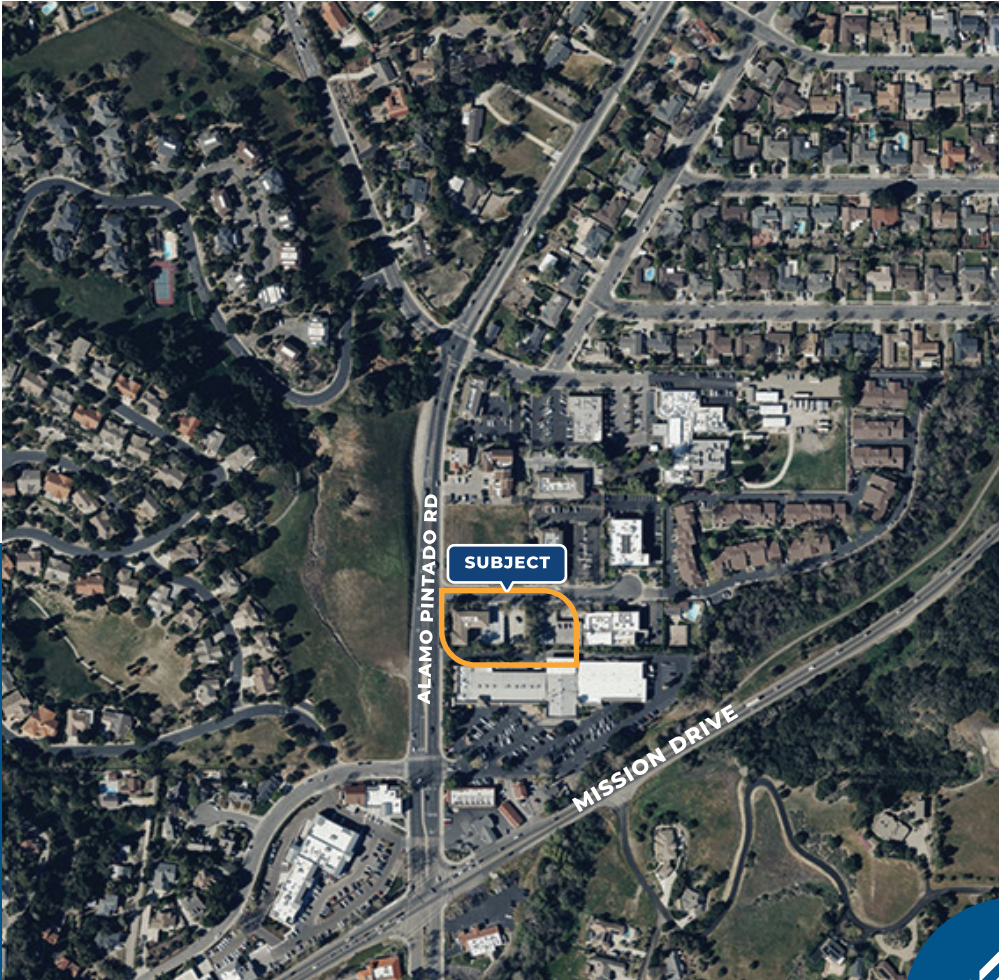
*The information provided here has been obtained from the owner of the property or from other sources deemed reliable. We have no reason to doubt its accuracy, but we do not guarantee it.*

Property  
**GALLERY**  
**MEDICAL OFFICE SPACE**



*The information provided here has been obtained from the owner of the property or from other sources deemed reliable. We have no reason to doubt its accuracy, but we do not guarantee it.*

# Property AREA OVERVIEW



SAPPHIRE SELECT

PROPERTIES, INC.

DRE #02193853

WWW.SAPPHIRESELECTPROPERTIES.COM

**LENA BERCH**

OWNER/BROKER | CA DRE #00864783  
805.694.6355

lena@sapphireselectproperties.com

**CRISTINA BERCH**

LEASING COORDINATOR | CA DRE # 02193142  
805.680.2279

cristina@sapphireselectproperties.com

*The information provided here has been obtained from the owner of the property or from other sources deemed reliable. We have no reason to doubt its accuracy, but we do not guarantee it.*