

1607 Mission Dr #105

SOLVANG, CA 93463

OFFICE/RETAIL SPACE
FOR LEASE



LENA BERCH | OWNER/BROKER
DRE #00864783
lena@sapphireselectproperties.com

CRISTINA BERCH
LEASING COORDINATOR
cristina@sapphireselectproperties.com

SAPPHIRE  SELECT
PROPERTIES, INC.

DRE #02193853
805.694.6355

WWW.SAPPHIRESELECTPROPERTIES.COM





River Oak Plaza BUELLTON, CA

River Oak Plaza is in the growing community of Buellton in the Santa Ynez Valley. It is positioned just a block from the 101 Freeway on busy Highway 246, which are traffic corridors leading to Santa Barbara, Santa Maria, the heart of Santa Ynez Valley, and Lompoc.

The Plaza offers retail, office, and other commercial suites. Next to Albertsons and CVS Shopping Center. Other tenants include Neary Chiropractic, ServPro, Olive Grove Charter School, Farmers Insurance and Zaca Coffee.

SANTA YNEZ VALLEY

Six small towns are home to the region and include Ballard, the smallest and oldest community, Solvang, a charming Danish-American hamlet, the rapidly growing Buellton, the vintage chic community of Los Alamos, the laid-back wine tasting haven of Los Olivos, and the turn-of-the-20th-Century township of Santa Ynez.





Specifics SUITE #105

BASE RENT: \$2,180 (\$1.60/SF/Mo)

EST: NNN \$858 (\$0.63/SF/Mo)

TOTAL RENT \$3,038/Mo

SIZE: 1,362 SF

BLDG SIZE: 23,740 SF

FLOORS: 2

TERM: 3-5 YEARS

ESCALATIONS: 4% ANNUALLY

HVAC: CENTRAL A/C

YEAR: 1986

ZONING: C2 GENERAL COMMERCIAL

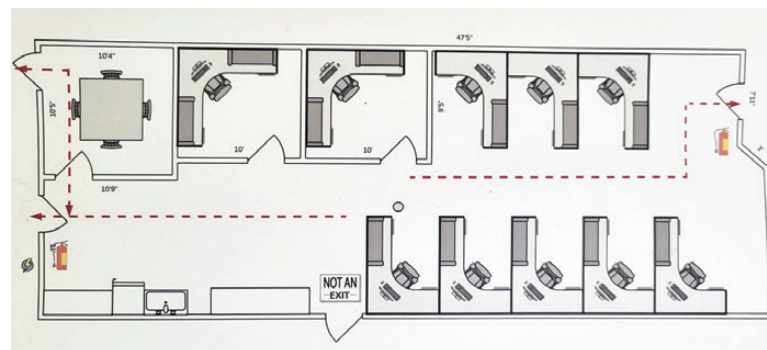
RESTROOMS: COMMON

UTILITIES: TENANT PAYS

PARKING: AS AVAILABLE

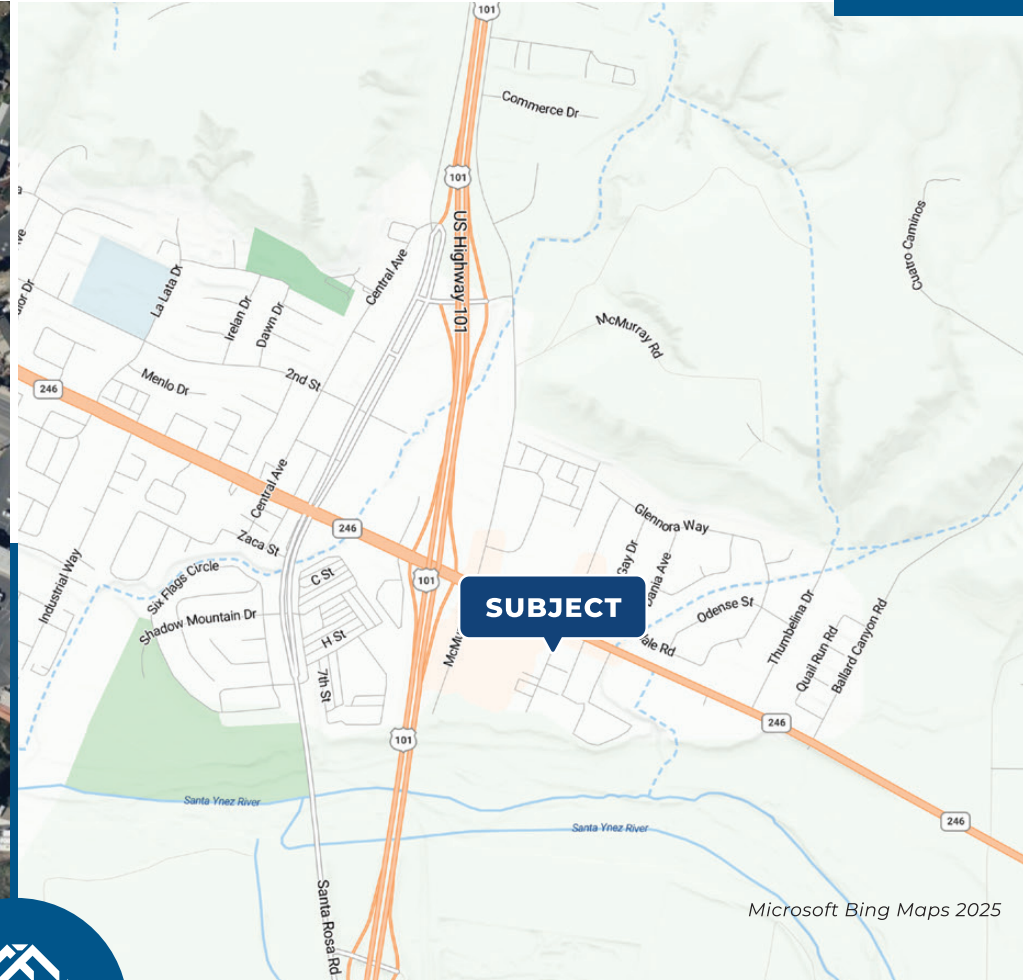
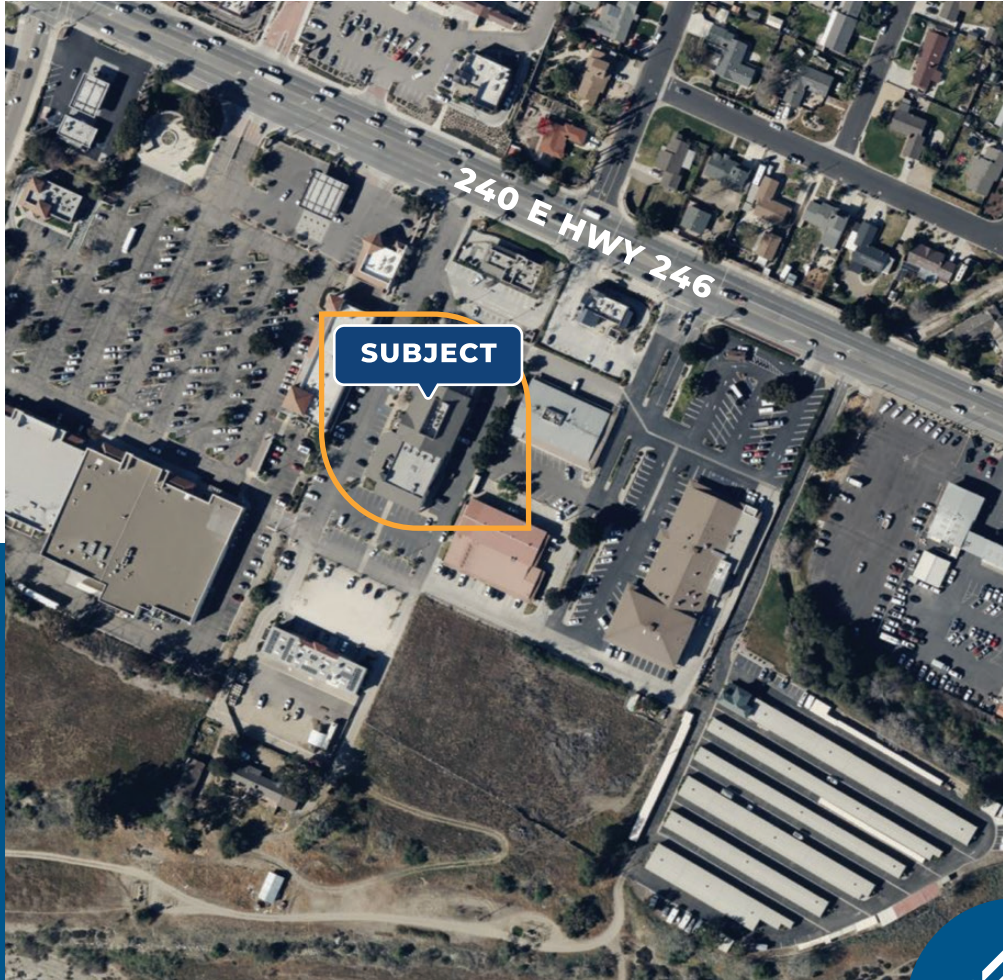
Total Monthly Rent
\$3,038

Highly visible retail or office suite in River Oak Plaza. The prominent corner location; spacious, open floor plan; and lots of windows make this a pleasant and attractive location for your business.



The information provided here has been obtained from the owner of the property or from other sources deemed reliable. We have no reason to doubt its accuracy, but we do not guarantee it.

Property AREA OVERVIEW



LENA BERCH

OWNER/BROKER | DRE #00864783

805.694.6355

lena@sapphireselectproperties.com



PROPERTIES, INC.

DRE #02193853

WWW.SAPPHIRESELECTPROPERTIES.COM

CRISTINA BERCH

LEASING COORDINATOR

805.680.2279

cristina@sapphireselectproperties.com

The information provided here has been obtained from the owner of the property or from other sources deemed reliable. We have no reason to doubt its accuracy, but we do not guarantee it.